

Release Notes Medtech32

New Zealand Formulary (BPACNZRx) Integration



Drug and Staff Setup

(February 2020)



These release notes contain important information for Medtech32 users. Please ensure that they are circulated amongst all relevant staff. We suggest that this document is filed safely for future reference.

Contents

<u>Drug Setup</u>	<u>3</u>
DRUG CLASS AND THERAPEUTIC OPTIONS	3
NZULM CODING	3
IMMP AND SPORT CATEGORIES	4
<u>Staff Setup</u>	<u>6</u>
ENABLE REPEAT SCRIPT WITHOUT OLD DRUG WARNINGS	6
DISPLAY WARNING FOR MILD PATIENT MEDICAL WARNINGS	6
INTERACTION WARNING MESSAGES	7
ACTION BASED INTERACTIONS	7
SEVERITY BASED INTERACTIONS	8
EVIDENCE BASED INTERACTIONS	9

Drug Setup

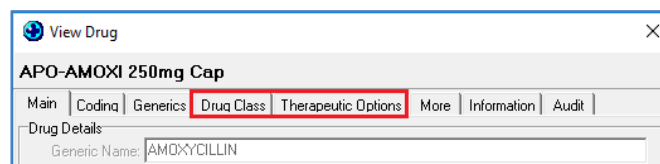
Setup ► Clinical ► Drug

To accommodate the introduction of the New Zealand Formulary drug data within Medtech32, the following changes have been made in the Drug Setup screen:

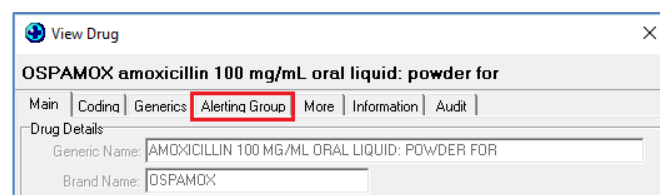
Drug Class and Therapeutic Options

The **Therapeutic Options** tab has been removed as there is no information in the BPACNZRx NZF drug data to support this function. The **Drug Class** tab has been renamed **Alerting Group** and acts in a similar fashion by grouping medications for patient Medical Warning purposes.

Previous MIMS New/View Drug screen



New BPACNZRx New/View Drug screen

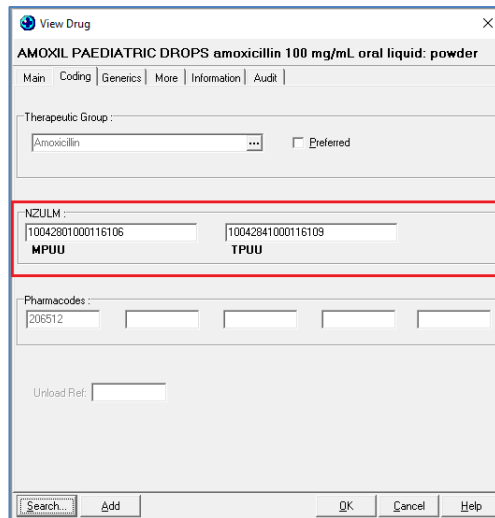


NZULM Coding

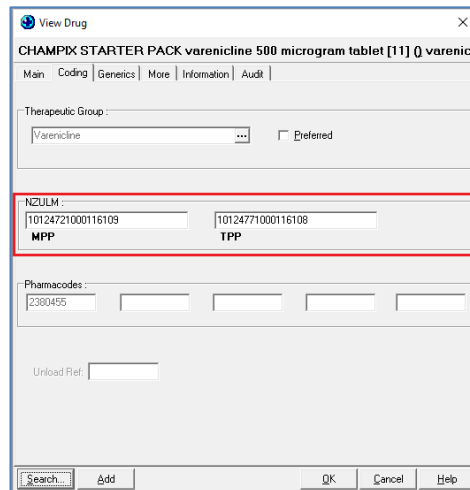
The NZULM (Universal List of Medications) are responsible for the allocation new product codes as new products are introduced by Pharmac. This code is utilised as part of the NZePS prescribing. They also provision the product prescribing term which is utilised within BPACNZRx.

Within the **Coding** tab provision has been made to display the NZULM product code.

Both the MPUU (Medicinal Product Unit of Use) and TPUU (Trade Product Unit of Use) NZULM codes are displayed for reference.



Where the selected product is available in the form of a 'Pack' then both the MPP (Medicinal Product Pack) and TPP (Trade Product Pack) NZULM codes are displayed for reference.

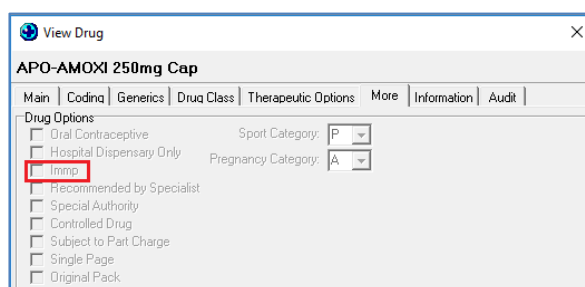


To learn more about the NZULM, please refer to: <http://info.nzulm.org.nz/>

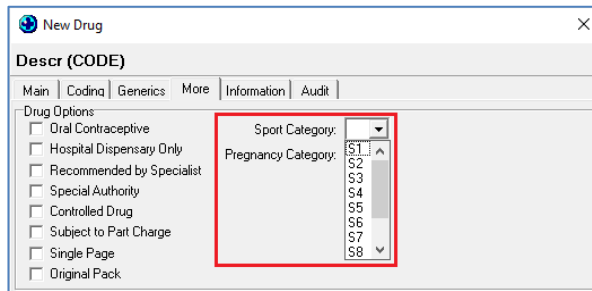
IMMP and Sport Categories

Within the **More** tab the IMMP (Intensive Medicine Monitoring Programme) option has been removed as IMMP is not available to either the NZF or MIMS drug formularies.

Previous MIMS New/View Drug screen



The Sports Category list has also been updated to display the World Anti-Doping Agency (WADA) Sports Categories, which allows more granular drug filtering when prescribing.



To learn more about the NZF Sport Categories, please refer to: https://nzf.org.nz/nzf_239

Staff Setup

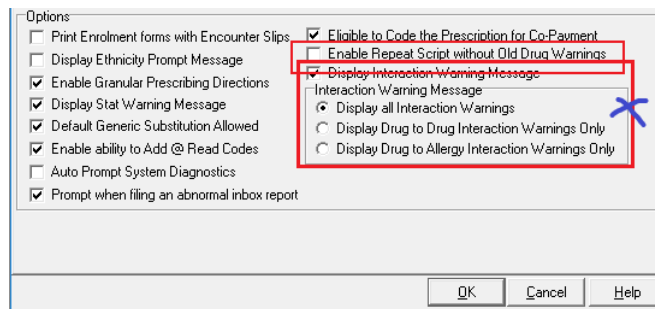
Setup ► Staff ► Members ► Provider Messages tab

To accommodate the introduction of the New Zealand Formulary drug data within Medtech32, the following changes have been made in the Staff Setup screen:

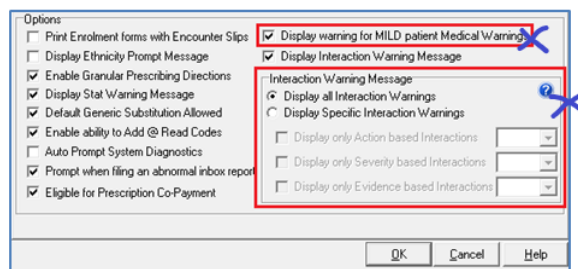
Enable Repeat Script without Old Drug Warnings

Within the Provider Messages tab, the **Enable Repeat Script without Old Drug Warnings** option has been removed. This is to ensure that users are not able to repeat prescriptions for old / unmapped MIMS medications by overriding the prompt to re-map to the equivalent NZF medication.

Previous MIMS New/View Staff screen



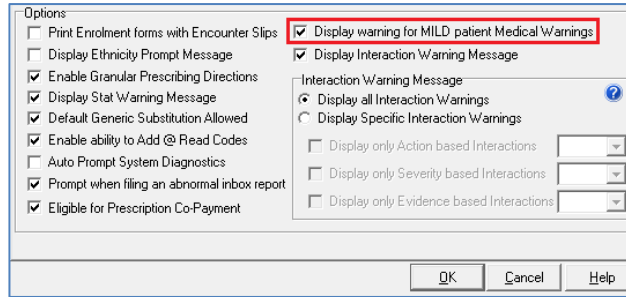
New BPACNZRx New/View Staff screen



Display warning for MILD patient Medical Warnings

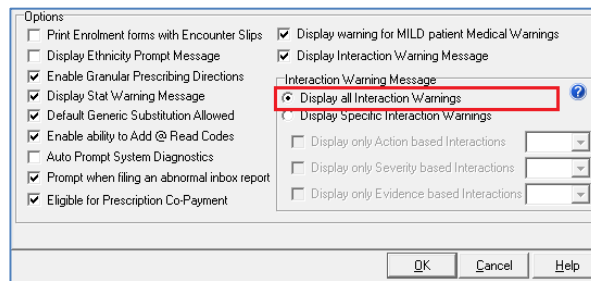
Within the Provider Messages tab, a new **Display warning for MILD patient Medical Warnings** option has been added. This is to ensure that users are prompted with a Medical Warning alert message even when the medical warning being presented is of Mild Severity.

By default this option is selected for all providers and can be unselected if the provider does not want to receive MILD patient Medical Warning alert prompts.

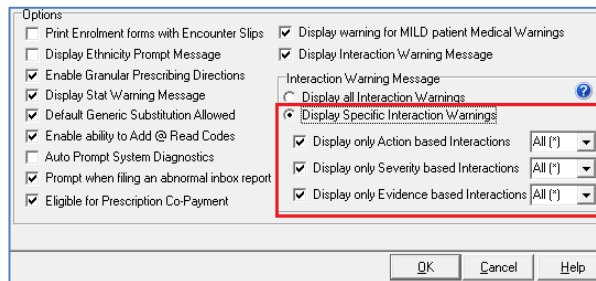


Interaction Warning Messages

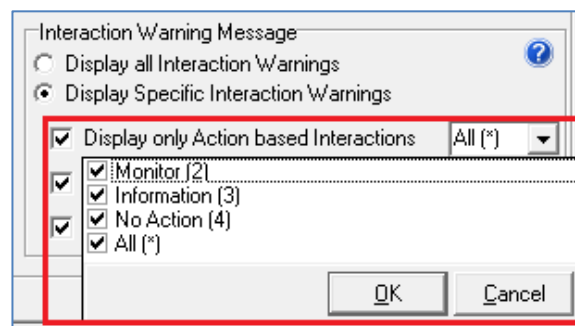
The level of Drug Interactions that are displayed to a prescriber when prescribing using BPACNZRx can be configured at an individual level. By default the 'Display All Interaction Warnings' option will be applied to all prescribers.



By selecting the 'Display specific Interaction Warnings' option the level of interactions to be displayed can be specified by selecting relevant sub-codes.



Action based Interactions



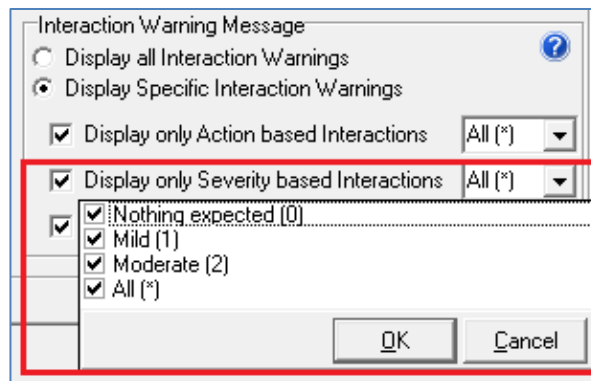
- **Avoid:** For interactions where a drug combination is best avoided. This will mainly be used to highlight contraindicated drug pairs.
- **Adjust:** For interactions where the interaction can be accommodated, but where it is recommended that either one of the drugs is changed, or the dose is altered on initiating the combination.

- **Monitor:** For interactions where the drug pair is valuable and no compensatory action is possible, but the patient needs to be monitored to assess the outcome. For interactions where biochemical or therapeutic drug monitoring is recommended and further action may be needed based on the results.
- **Information:** For interactions where close follow up or monitoring are probably not automatically warranted due to the low probability of an interaction, but where more information is given in the event of a problem.
- **No action:** For interactions where no action is needed, or for drugs pairs where no interaction occurs.

Important Note – Action Based Interactions

For clinical safety reasons Avoid and Adjust action codes cannot be suppressed.

Severity based Interactions

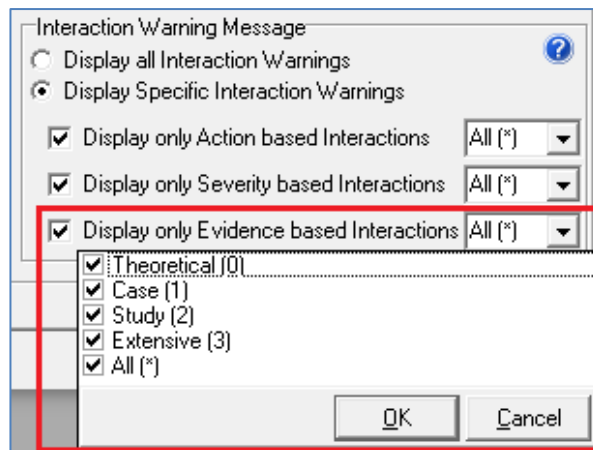


- **Severe:** For interactions that could totally incapacitate a patient or result in either a permanent detrimental effect or a life-threatening event.
- **Unknown:** To be used only as a last resort. Designed for those interactions (such as the antiretrovirals), which are predicted but where there is insufficient evidence to even hazard a guess at the outcome.
- **Moderate:** For interactions that could result in an effect that may either cause considerable distress or partially incapacitate a patient. These interactions are unlikely to be life-threatening or result in long-term effects.
- **Mild:** For interactions that could result in an effect that is mild and unlikely to unduly concern or incapacitate the majority of patients
- **Nothing expected:** For interactions that are unlikely to result in an effect, or for drugs pairs where no interaction occurs.

Important Note – Severity Based Interactions

For clinical safety reasons Severe and Unknown severity codes cannot be suppressed.

Evidence based Interactions



- **Extensive:** For interactions where the information given is based on numerous small or medium size studies or several large studies. The information is usually supported by case reports.
- **Study:** For interactions where the information given is based on formal study. This may be one small or medium size study, or several small studies. The studies may or may not be supported by case reports.
- **Case:** For interactions where the information given is based either on a single case report or a limited number of case reports. No trials appear to have been conducted.
- **Theoretical:** For interactions where the information given is based on a theoretical interaction or lack of interaction. This information may have been derived either from in vitro studies involving the drug in question or based on the way other members of the same group act.

Careful consideration should be given before suppressing alerts for prescribers and should be relative to their experience.

Should a prescriber wish to view any interactions which have been suppressed the easiest method would be to utilise the Interactions feature available on the NZF website, www.nzf.org.nz.



Meet Sara – she's here to help!

Are you looking for a quick answer to your support query or changes related to this release?

Sara, our Virtual Support Chat Bot is available within our Insight Customer Portal 24 hours a day, 7 days a week, whenever you need help.

All you need to do is type a question, and Sara will provide the answer. She has been trained on most of the questions we get asked regularly on our Support Desk.

If Sara cannot answer your support query, she will assist you in creating a Support Ticket or can pass you onto a member of our Customer Care team.

If you would like to ask Sara your next support query, log into Insight at insight.medtechglobal.com